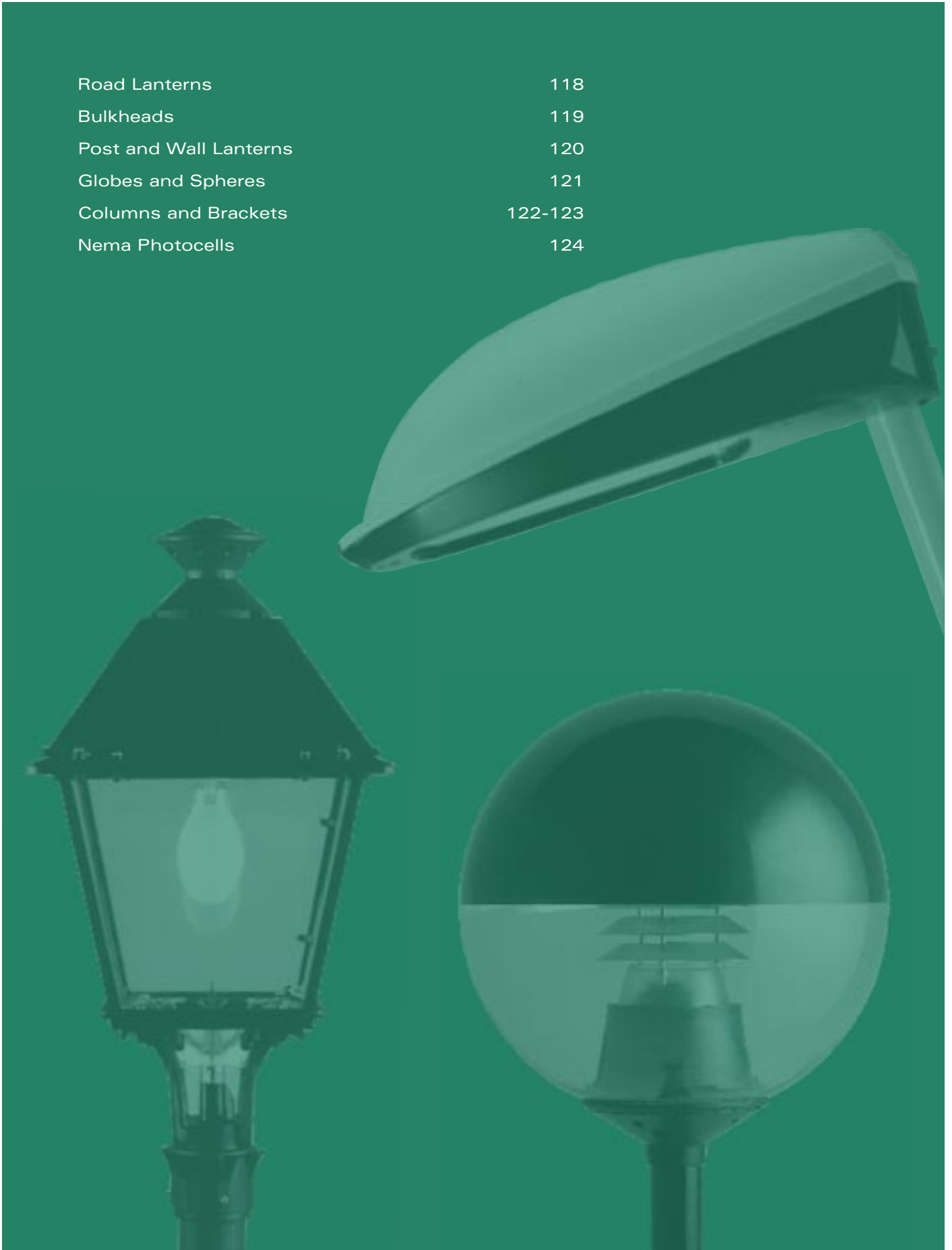


Road Lanterns	118
Bulkheads	119
Post and Wall Lanterns	120
Globes and Spheres	121
Columns and Brackets	122-123
Nema Photocells	124



ROAD LIGHTING

ROAD LANTERNS

Street lighting luminaires designed with ease of installation in mind. Quick release clips. Long term durability and photometric performance a top priority. Installation can be made with a choice of pole top or side entry. Two fitting options provide even greater flexibility.



ROAD LANTERN II

Part No.	Description	Code
MIDI		
EX-LAND70S	70W Son-E Int ES	8637
EX-LAND150S	150W Son-T GES	8635
EX-LAND70H	70W M/H Elliptical ES	8637
EX-LAND150H	150W M/H Tubular GES	8635
MAXI		
EX-LAND250S	250W Son-T GES	8632
EX-LAND250H	250W M/H Tubular GES	8632
EX-LAND400S	400W Son-T GES	8634
EX-LAND400H	400W M/H Tubular GES	8634

Fitting Variants / suffix:

- PC = Factory fitted Photocell
- PNC = Factory fitted Nema Photocell
- PDB = Factory fitted Polycarbonate drop bowl



SPECIFICATION

- Includes lamp
- IP66
- Cast Aluminium body
- Highly polished aluminium reflector
- Adjustable variable focus lampholder
- Cover glass as standard. Optional Poly bowl available (not 400W)
- Max weight: 11.4Kg
Windage: Glass Bowl 0.065m²
Poly Bowl 0.1165m²

LUNAR LANTERN II

Part No.	Description	Code
MIDI		
EX-LUND70S	70W Son-E Int ES	8637
EX-LUND100S	100W Son-T GES	8631
EX-LUND150S	150W Son-T GES	8635
EX-LUND70H	70W M/H Elliptical ES	8637
EX-LUND150H	150W M/H Tubular GES	8635
MAXI		
EX-LUND250S	250W Son-T GES	8632
EX-LUND400S	400W Son-T GES	8634
EX-LUND250H	250W M/H Tubular GES	8632
EX-LUND400H	400W M/H Tubular GES	8634

Fitting Variants / suffix:

- PC = Factory fitted 20mm Mini Photocell
- PDB = Factory fitted Polycarbonate drop bowl
- GDB = Factory fitted Glass drop bowl



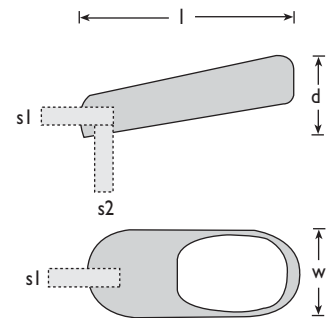
SPECIFICATION

- Includes lamp
- IP66 optical assembly and Gear housing flat glass lens as standard
- Cast Aluminium body, polymer canopy with quick release electrical disconnect
- Universal mounting
- Quick release, removable gear tray
- Max weight: 8 or 12Kg
Windage: 0.12 or 0.16m²

■ Typical mounting heights 5-10m

DIMENSION TABLE (mm):

	L	D	W	S1	S2
LAN II MIDI	540	248	286	48-76	48-76
LAN II MAXI	630	305	325	48-76	48-76
LUN II MIDI	622	211	380	34-60	60-76
LUN II MAXI	688	228	440	34-60	60-76



IDEAL FOR

- Public squares
- Large gardens
- Residential areas
- Precincts
- Pedestrian areas
- Car parks
- Estate roadways
- Shopping areas
- Parklands
- Roadways (Group B)

■ Steel columns & brackets see pages 122 & 123





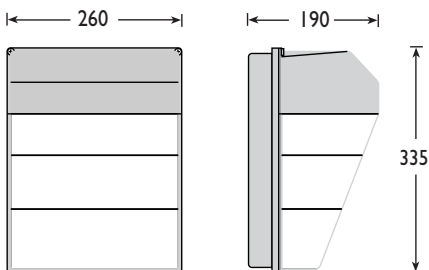
IP65

PROBE 2

Distinctively designed wallpack with universal applications including wall and pole top mounting in single and multiple options. As well as a high output discharge version the 2D fluorescent luminaire has the advantage of an optional integral maintained emergency backup.

SPECIFICATION

- Includes Lamps
- Tough anti-corrosive polycarbonate construction (Black as standard, white available)
- Wall and column top mounting
- Quality polished aluminium reflector
- IP65 Rating, certified to EN60598
- Fluorescent versions have switch start gear as standard, HF available to order
- Photocell versions available
- Protective cage available



PROBE 2 DISCHARGE

Part No.	Description	Code
AM-PR70S	70W Son-E Int ES	4361
AM-PR80M	80W MBFU ES	4360
AM-PR70H	70W M/Halide ES Elipt	4363
AM-PR100H	100W M/Halide ES Elipt	4365

PHOTOCELL VERSION

AM-PR70S/PC	70W Son-E + P/Cell	4362
AM-PR80M/PC	80W MBFU + P/Cell	4360
AM-PR70H/PC	70W M/Halide + P/Cell	4364
AM-PR100H/PC	100W M/Halide + P/Cell	4366

PROBE 2 FLUORESCENT

Part No.	Description	Code
AM-PR2D28	28W 2D	4416
AM-PR2D38	38W 2D	4417

EMERGENCY VERSION

AM-PR2D28E3	28W 2D Emergency	4426
AM-PR2D38E3	38W 2D Emergency	4427

Suffix:

PC = Factory Fitted Photocell

/W = White Body

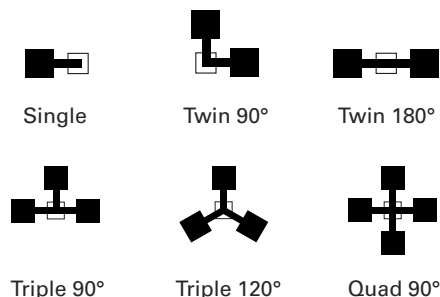
ACCESSORIES

Part No.	Description	Code
TO SUIT ALL MODELS		
AM-PRWG	Wire Mesh Protective cage	4379

BRACKETS

Part No.	Description
FOR ALL MODELS	
AM-PRO1HV	Single Post Bracket
AM-PRO2V90	90° Twin Post Top
AM-PRO2V180	180° Twin Post Top
AM-PRO3V90	90° Triple Post Top
AM-PRO3V120	120° Triple Post Top
AM-PRO4V	90° Quad Post Top

Bracket to fix on 76mm Column Top
Galvanised painted black



LAMP GUIDE

See pages 143-145 for a comprehensive lamp guide



■ Timer and control accessories see page 124



POST & WALL LANTERNS

Three distinctively different PostTop luminaires to match existing installations when replacements are required and add panaché & functionality to any new schemes.



SIGMA II

Part No.	Description	Code
SIGD70S	70W Son-E Int ES	8647
SIGD150S	150W Son-E Ext GES	8641
SIGD70H	70W M/H Elipt ES	8647
SIGD150H	150W M/H Elipt GES	8641
EX-CTA 76/60	Column top adaptor	5150

Dimensions (mm) l= 450, w= 590, s= 76

Fitting Variants / suffix:

PC = Factory fitted 20mm mini photocell



IP54

SPECIFICATION

- Includes lamps
- Suitable for mounting 4-6m on 76mm spigot
- Die-Cast silver aluminium base with integral control gear and spun aluminium top cover
- UV stable Shatter-proof nylon canopy with easy lamp access
- Attractive prismatic polycarb diffuser provides symmetrical beam distribution with minimal upward light pollution

HERITAGE

Part No.	Description	Code
HER70S	70W Son-E Int ES	8647
HER100S	100W Son-E Ext GES	8641
HER150S	150W Son-E Ext GES	8645
HER70H	70W M/H Elipt ES	8647
HER100H	100W M/H Elipt ES	8641
HER150H	150W M/H Elipt ES	8645

HERITAGE ACCESSORIES

HER/WB	500mm Wall Bracket
HER5/EMBKIT	Column Embellishment Kit includes 5 Decorative Casting Pieces

HER/LL White Alum Louvre Stack

Dimensions (mm) l = 710, w = 390, s = 76

Fitting Variants / suffix:

PC = Factory fitted 20mm mini photocell



IP66

SPECIFICATION

- Includes lamps
- Suitable for mounting 4-6m on 76mm spigot
- Advanced modern polymer body with clear polycarbonate diffuser
- Access to removable gear tray is via a hinged canopy
- Optional attractive aluminium louvre stack to provide symmetrical beam distribution with minimal upward light pollution
- Wall bracket option and decorative cast column embellishment kits available

SECTOR

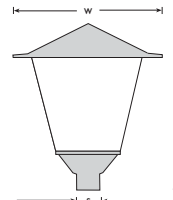
MAXI WALL LANTERN

Part No.	Description	Code
MAXI COACH LANTERN		
SCLM150B	150W BC Black	4499
SCLM150W	150W BC White	4499
WITH PHOTOCELL		
SCLM150PC B	150W BC Black	4499
SCLM150PC W	150W BC White	4499

LOW ENERGY MAXI COACH LANTERN

SCLM26B	26W TCT 2 Pin Black	4499
SCLM26W	26W TCT 2 Pin White	4499
WITH PHOTOCELL		
SCLM26PCB	26W TCT 2 Pin Black	4499
SCLM26PCW	26W TCT 2 Pin White	4499

Dimensions (mm) l=550, w=250



IP44

SPECIFICATION

- Polycarbonate Coach Lanterns
- IP44 vandal resistant polycarbonate body and 1 piece lens.
- Prewired and quick fit installer connection.
- GLS Version requires lamps - See page 143
- Energy saving version Includes a 1x26W TCD lamp and complies to Part L1 of the building regs.



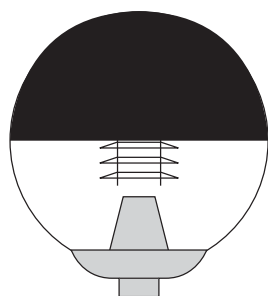
SPHERES

A versatile collection of globe shape luminaires in various sizes and colour finishes. Covered top style avoids light pollution when used in outdoor areas, the clear style with integral louvred reflector or opal finish are ideal for a greater variety of applications.

SPECIFICATION

- Includes Lamps
- Globes available in clear, opal & smoked Polycarbonate & Acrylic versions
- Covered top version avoids light pollution
- 500mm bowl sizes as standard / 400mm & 600mm versions available on request / 250W & 400W versions available on request
- Metal halide, high pressure sodium and mercury light sources
- Integral control gear up to 150W housed in black polycarbonate base
- 76mm spigot mounting as standard to suit single column top mounting
- 60mm spigot mounting available to suit multi bracket column top and wall mounting
- Complete with louvre, refractor or plain lamp options offering a choice of light patterns
- Refractor versions only available up to 100W
- Light deflecting plate available to fit inside louvre to control light spill in certain directions

500



Standard Single Column Top

ø60
Wall & Multi Bracket Mounting



IP54



BLACK TOP SPHERE 500mm DIAMETER

Part No.	Description	Code
EX-BSPH50S	50W Son-E Int ES	8647
EX-BSPH70S	70W Son-E Int ES	8647
EX-BSPH100S	100W Son-E GES	8641
EX-BSPH150S	150W Son-E GES	8645
EX-BSPH50M	50W MBFU ES	8647
EX-BSPH80M	80W MBFU ES	8647
EX-BSPH125M	125W MBFU	8641
EX-BSPH70H	70W M/H Elipt ES	8647
EX-BSPH100H	100W M/H Elipt ES	8641
EX-BSPH150H	150W M/H Elipt ES	8645

Please add the following to the Cat No. to make up the sphere type:
/60 = 60mm Spigot entry option (standard 76mm)

Optic Type

LV = Louvre Stack or RF = Refractor Lens (100W max)

Sphere Type

AC = Acrylic or PO = Polycarbonate

Sphere Colour

CL = Clear or OP = Opal or SM = Smoked

OPEN TOP SPHERE 500mm DIAMETER

Part No.	Description	Code
EX-OSPH50S	50W Son-E Int ES	8647
EX-OSPH70S	70W Son-E Int ES	8647
EX-OSPH100S	100W Son-E GES	8641
EX-OSPH150S	150W Son-E GES	8645
EX-OSPH50M	50W MBFU ES	8647
EX-OSPH80M	80W MBFU ES	8647
EX-OSPH125M	125W MBFU ES	8641
EX-OSPH70H	70W M/H Elipt ES	8647
EX-OSPH100H	100W M/H Elipt ES	8641
EX-OSPH150H	150W M/H Elipt ES	8645

Please add the following to the Cat No. to make up the sphere type:
/60 = 60mm Spigot entry option (standard 76mm)

Optic Type

LV = Louvre Stack or RF = Refractor Lens (100W max)

Sphere Type

AC = Acrylic or PO = Polycarbonate

Sphere Colour

CL = Clear or OP = Opal or SM = Smoked

BRACKETS

Part No.	Description	Code
EX-SPHB/WALL	Wall Bracket	5158
EX-SPHB/2	Twin Column Bracket	5158
EX-SPHB/3	Triple Column Bracket	5158
EX-SPHB/4	Quad Column Bracket	5158

Supplied to fit 60mm globe spigot entry as standard and 76mm column top mounting

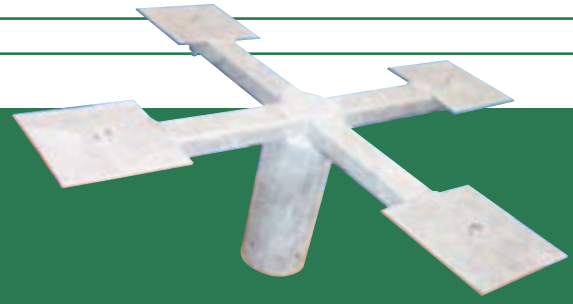
LAMP GUIDE

See pages 143-145 for a comprehensive lamp guide



■ Steel columns see page 123

COLUMN TOP BRACKETS

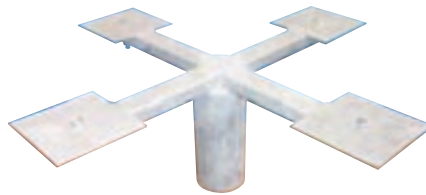


COLUMN TOP BRACKETS

Tubular steel brackets for the safe support of single or multiple luminaires to tubular steel lighting columns. Hot dip galvanised finish providing a corrosion resistant product. Supplied complete with all necessary mounting bolts.

FLOODLIGHT BRACKET

Part No.	Description	Code
Column Top Diameter		
SINGLE 180° (A)		
EX-SFB1/76	To fit 76mm	5151
EX-SFB1/101	To fit 101mm	5151
EX-SFB1/127	To fit 127mm	5151
TWIN 180° (B)		
EX-SFB2/76	To fit 76mm	5152
EX-SFB2/101	To fit 101mm	5152
EX-SFB2/127	To fit 127mm	5152
TRIPLE 180° (C)		
EX-SFB3/76	To fit 76mm	5153
EX-SFB3/101	To fit 101mm	5153
EX-SFB3/127	To fit 127mm	5153
QUAD NSEW (C)		
EX-SFB4X/76	To fit 76mm	5154
EX-SFB4X/101	To fit 101mm	5154
EX-SFB4X/127	To fit 127mm	5154
QUAD PARALLEL (D)		
EX-SFB4/76	To fit 76mm	5154
EX-SFB4/101	To fit 101mm	5154
EX-SFB4/127	To fit 127mm	5154



COLUMN TOP ADAPTOR

Part No.	Description	Code
EX-CTA76/60	76mm Shaft to 60mm Spigot	5150

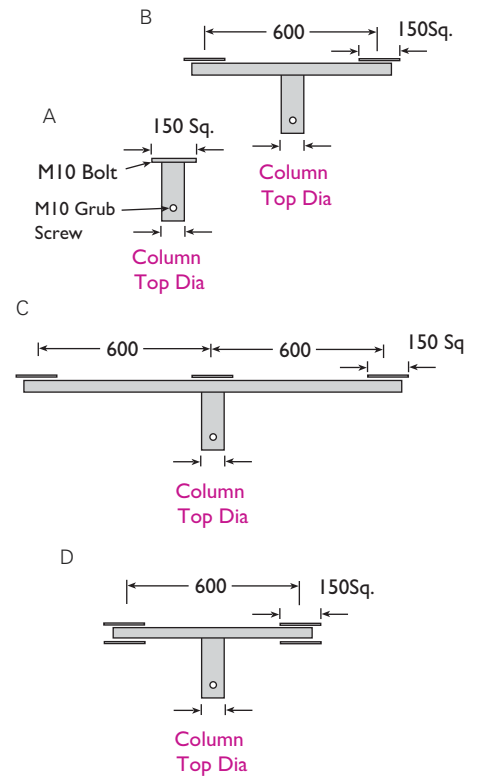
ROADLANTERN BRACKET

Part No.	Description	Code
Column Top Diameter		
500MM ARM LENGTH (60MM DIA.)		
EX-SRBS5/76	To fit 76mm	5161
EX-SRBS5/101	To fit 89/101mm	5161
EX-SRBS5/127	To fit 127mm	5161
EX-SRBS5/WALL	Wall Bracket	5161
500MM ARM LENGTH (60MM DIA.)		
EX-SRBT5/76	To fit 76mm	5162
EX-SRBT5/101	To fit 89/101mm	5162
EX-SRBT5/127	To fit 127mm	5162



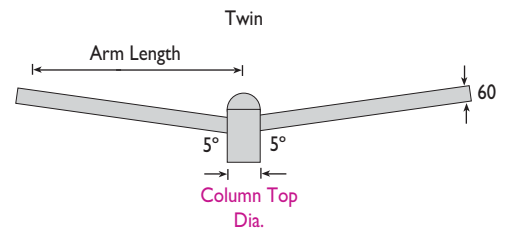
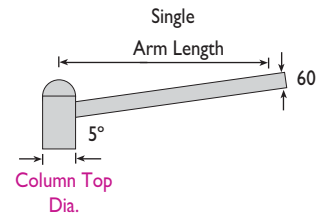
SPECIFICATIONS

Brackets should be selected to match outside diameter of column top (shaft or spigot)



- 60mm Diameter Arm as Standard
34mm and 40mm Diameter available on request
- Specialist fabrication allows Stratus to manufacture specials to suit your needs

Alternative arm lengths available

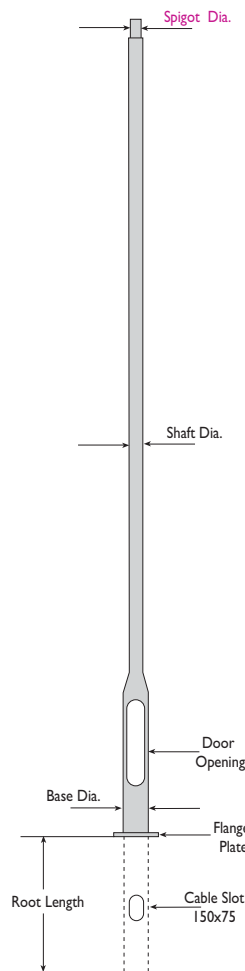
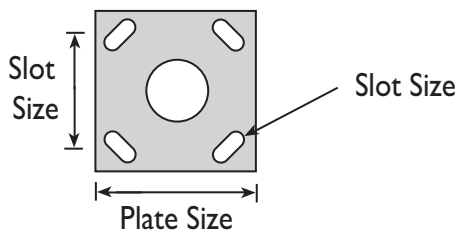


COLUMNS

Tubular steel lighting columns for the safe support of single or multiple luminaires, having a boarded base compartment for the housing of control gear and the termination of incoming supply cables. Available in rooted or flange mounted versions.

SPECIFICATIONS

- Hot dip galvanised internally and externally as standard with additional bitumen coated root
- Paint and/or powder coating facilities available
- Substantial lipped base compartment door with tamper resistant lock for triangular key (One key supplied per 1-10 columns order)
Door Opening Dimensions
Up to 140mm diameter base = 500 x 100mm
Above 140mm diameter base = 600 x 115mm
- Base compartment contains a treated wooden gear board and a brass earth bolt
- Planted root or flanged versions available
- In house fabrication for specials or modifications available
- Both base hinged and mid-hinged columns are also available that allow fittings to be raised and lowered safely from ground level to heights of up to 20 metres



COLUMNS

Part No.	Description	Code				
	Spigot Dia	Shaft Dia	Base Dia	Root Length		
EX-TC3	3m	76	76	140	800	5133
EX-TC4	4m	76	76	140	800	5134
EX-TC5	5m	76	76	140	800	5135
EX-TC6	6m	76	76	140	1000	5136
EX-TC8	8m	76	89	168	1200	5138
EX-TC8M	8m	101	114	168	1200	5138
EX-TC8H	8m	127	140	192	1200	5138
EX-TC10	10m	101	114	168	1500	5110
EX-TC10H	10m	127	140	192	1500	5110
EX-TC12H	12m	127	140	192	1700	5110

Suffix:

FP = Flanged Plate for surface mounting

Octagonal and conical columns available to order

FLANGED COLUMN FOUNDATION BOLT KITS

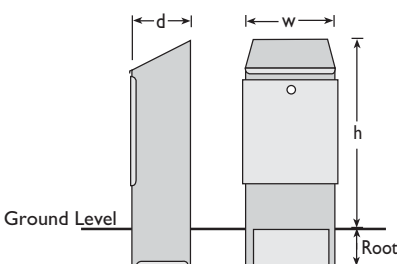
Part No.	Description
EX-FB001	4xM16x500 Bolt kit for 3-6m columns
EX-FB002	4xM24x700 Bolt kit for 8-12m columns

FLANGED PLATE DETAILS

Part No.	Description			
	Plate Size	Slot Ctrs	Slot Size	Bolt ø
3m	300x300	200Sq	24 x 50	M16
4m	300x300	200Sq	24 x 50	M16
5m	300x300	200Sq	24 x 50	M16
6m	300x300	200Sq	24 x 50	M16
6m (Heavy)	420x420	300Sq	33 x 70	M24
8m	420x420	300Sq	33 x 70	M24
10m	420x420	300Sq	33 x 70	M24
12m	420x420	300Sq	33 x 70	M24

CUTOUTS & FEEDER PILLARS

- Allows for the safe termination of incoming and outgoing SWA cables as well as providing a fused supply to the column top luminaire(s)



FEEDER PILLARS

Part No.	Description
	h x w x d x Root (mm)
EX-SFP005	790x320x230 350 Root
EX-SFP006	610x411x180 300 Root
EX-SFP008	810x611x250 300 Root
EX-SFP009	1035x661x281 350 Root
EX-SFP010	1110x811x350 350 Root
EX-SFP012	1203x1111x410 350 Root

CUTOUTS

Part No.	Description	Code
EX-FC6	Single Phase with 6A fuse	2414
	Recommended Fuse (LST Type)	2172

PHOTO ELECTRIC CELLS & TIMERS

A complete range of controls to provide optimum control over a wide range of luminaires and applications.



PHOTO ELECTRIC CELLS (NEMA HEAD)

Part No.	Description	Code
SPEC4E (A/SRG)	Photo Electric Cell (Head)	4370
SPEC4EKIT	Photo Electric Cell Kit	4371
SPEC9PN	Part Night Cell Kit	4371

PHOTO ELECTRIC CELLS - 20MM

Part No.	Description	Code
SPEC20	Mini Photo Electric Cell	4372
SPEC20/R	Mini Photo Electric Cell Remote	4373



SPECIFICATION

- Switch 1000W resistive 600W inductive
- Surge protection

SPECIFICATION

- Mounts in 20mm dia. aperture
- Switch 1000W resistive 600W inductive

TIME AND LUX ADJUSTABLE PHOTO ELECTRIC CELL

Part No.	Description	Code
SVAR04	Variable Photo Electric Cell	4374



SPECIFICATION

- Energy efficient, integral timeswitch
- Allows on at dusk with fixed time off

24 HOUR ELECTRONIC TIMER

Part No.	Description	Code
S24EIHT	24 Hour Electronic Timer	3015



SPECIFICATION

- Provides economical and convenient control
- Switches On and Off up to 4 times a day
- Shortest switching time is 1 minute
- Self-cancelling override for instant On/Off control
- 1000 hours memory back up
- Integral thermal fuse for extra protection

7 DAY ELECTRONIC TIMER

Part No.	Description	Code
S7EIHT	7 Day Electronic Timer	3015



SPECIFICATION

- Has all the benefits of the 24 hour version plus; individual day; everyday; every weekday / weekend programme selections for ultimate control
- 6 on 6 off switching commands over 7 days
- Up to 42 On/Off switchings per week
- Simple 2 button programming & review facility
- Self-cancelling override for instant On/Off control
- 1000 hours memory back-up
- Integral thermal fuse for extra protection

24 HOUR/HALF DAY & DAY OMIT 3 PIN 20A TIMER

Part No.	Description	Code
SRTS113	3 Pin 20A Electronic Timer	3013



SPECIFICATION

- Industry standard round pattern time switch. Can be used as a direct replacement for single channel On/Off switching 24 On/Off programmes in 24 hours
- Half day(s) and day(s) omit unlimited over 7 day period
- Permanent On facility
- Manual override