



range introduction

Let there be light

astral™, the advanced lighting system from MK Electric, brings out the best in your environment and is the ideal lighting control solution if you are looking to enhance the ambience and atmosphere in any room or residence.

Providing sophisticated and inspirational lighting control, astral™ is an extremely versatile and intelligent system, which incorporates the award winning Zensys RF communications technology (Z-Wave®), ensuring the ultimate in both reliability and flexibility.

With the freedom to create the perfect lighting scenes for home or business environment, astral is the obvious choice for those who value ease and confidence of operation.

**Z-wave®**

Products that speak z-wave® work together better

feature benefits

**Wireless**

Innovative technology, easy to install and programme

- astral communicates via a 2 way RF signal
- wireless technology offers end user flexibility and peace of mind

**MESH**

Offers the most reliable wireless communication system

- astral devices link together in a network to form a MESH
- signals can be routed around obstacles

**Interoperable**

Expandable system with other z-wave® applications

- z-wave® has been adopted by more than 160 companies

**Energy Saving**

Control lighting to reduce energy usage

- when in standby mode astral mains powered devices are designed to consume < 1 watt

Convenience

Control any light from any point in your home – they do not need to be wired together

Reliability

Mains powered devices form a MESH network - multi communication paths are established to give the most reliable RF performance

Flexibility

Ideal for retrofit and new build - can be installed into existing lighting circuits, no need for additional wiring

Confidence

All devices are transmitters and receivers – the user gets positive acknowledgement that his instructions have been received at all target devices

Atmosphere

Differing ways to control the lighting are offered - Scene and Group control give the freedom to create the perfect lighting scenarios, with dramatically differing effects

Occupancy simulation

A standard security feature – simply set your lights to repeat the last 24 hours activity at the push of a single button

Rapid installation and connection

Uses standard installation practices - fits a 35mm BS back box and has familiar electrical connections

Choice of lamps

Compatible with most types of lamps - including standard incandescent, halogen and compact fluorescent*

Extensive solutions

Uses Zensys, a proven RF platform – allows unparalleled control over curtains, blinds etc using equipment from over 160 manufacturers

Great looks

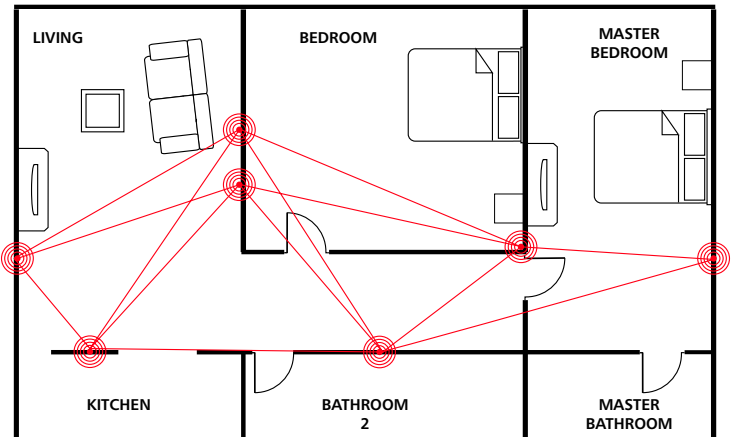
Numerous faceplate finishes are available to match your décor and taste and blends effortlessly with the ergonomically designed remote control, the use of multi coloured LEDs extend across all products to give clear common and informative indications to the user

*neutral maybe required

Reliable RF Technology

The RF we use within our products is 2 way and MESH based. This means that all our devices are linked together in a robust network, to give the most reliable RF performance.

Remember - If a RF signal cannot reach its target device it will automatically re route through other devices in the network.



Remote Control



1 Gang Battery Module with White (WHI) Fascia



1 Gang Switch Module with Brushed Stainless Steel (BSS B) Fascia



2 Gang 300W Dimmer Module



2 Gang Dimmer Polished Brass (PBR B) Fascia

Product Selector

Battery
ControllersMains
Controller
ModulesSwitch
ModulesDimmers
Modules

When selecting products for your installation – follow these 5 easy steps

step 1 **Select the Primary Controller**
We recommend a Remote Control, though this could be a Battery Controller

step 2 **Select the Switching and Dimming Modules you require**
We offer a range of these modules in both 1 and 2 Gang versions with various power ratings

step 3 **Select any additional Controllers you require**
In addition to the Remote Control, we offer Mains and Battery Powered Controllers in both 1 and 2 Gang versions

step 4 **Select the aesthetic faceplates to suit your requirements**
These are supplied in a wide range of colours in both plastic and metal aesthetic finishes

step 5 **Select the matching mechanical wiring devices you require**
If you have selected Metal Fascias, the Aspect range of mechanical products will complement your installation, see page 76

It is important to be fully conversant with the wiring requirements and loading capabilities of the astral system before placing your order – if unsure please get in contact.



LRC14U LBS



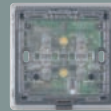
LIB1U CHA



LIB2U CHA



LIM1U C



LIM2U C



LSM11U C



LSM12U C



LDM31U C



LDM32U C



LDM61U C

LRC14U LBS
REMOTE CONTROL

1

LIB1U CHA
1 GANG BATTERY
CONTROLLER

1

LIB2U CHA
2 GANG BATTERY
CONTROLLER

1

Select the appropriate
1 Gang or 2 Gang Dimmer
Fascia for your Battery
Controller Module.

Operating Frequency
868.4 MHz

MOUNTING BOXES ARE
REQUIRED FOR
MAINS CONTROLLER
MODULES,
SWITCH MODULES AND
DIMMER MODULES
MOUNTING BOXES:
Flush 35mm

LIM1U C
1 GANG MAINS
CONTROLLER MODULE

1

LIM2U C
2 GANG MAINS
CONTROLLER MODULE

1

Select the appropriate
1 Gang or 2 Gang Dimmer
Fascia for your Mains
Controller Module.

Operating Frequency
868.4 MHz

Suitable for use with the
following load types and
maximum load ratings only.
GLS / Tungsten filament
25 - 2400W
Tungsten halogen
25 - 2000W
Fluorescent tubes with ferro-
magnetic ballast and power
factor correction 18 - 1800W
Maximum load capacitance
140µF
Fluorescent tubes with
electronic ballast*
(eg 30 x 18W tubes/ballasts)
18 - 540W
Compact fluorescent (low
energy) lamps*
25 - 750W
ELV Tungsten halogen
ferro-magnetic or electronic
transformers*
25 - 1500VA

* requires Neutral connection
to switch

BS EN 60669-2-1
BS EN 61000-6-1 / 3
ETSI EN 301489-1 / 2
ETSI EN 300220-1/ 2

LSM11U C
1 GANG
10AX SWITCH MODULE

1

LSM12U C
2 GANG
10AX SWITCH MODULE

1

Select the appropriate
1 Gang or 2 Gang Switch
Fascia for your Switch
Controller Module.

Suitable for use with the
following load types and
maximum load ratings only.

GLS / Tungsten filament
25 - 2400W
Tungsten halogen
25 - 2000W
Fluorescent tubes with ferro-
magnetic ballast and power
factor correction 18 - 1800W
Maximum load capacitance
140µF
Fluorescent tubes with
electronic ballast*
(eg 30 x 18W tubes/ballasts)
18 - 540W
Compact fluorescent (low
energy) lamps*
25 - 750W
ELV Tungsten halogen
ferro-magnetic or electronic
transformers*
25 - 1500VA

* requires Neutral connection
to switch

BS EN 60669-2-1
BS EN 61000-6-1 / 3
ETSI EN 301489-1 / 2
ETSI EN 300220-1/ 2

LDM31U C
1 GANG 300W
DIMMER MODULE

1

LDM32U C
2 GANG 300W
DIMMER MODULE

1

LDM61U C
1 GANG 600W
DIMMER MODULE

1

Select the appropriate
1 Gang or 2 Gang Dimmer
Fascia for your Dimmer
Controller Module.

Suitable for use with the
following load types and
maximum load ratings only.
1G 300W Dimmer
GLS Tungsten filament
Tungstent Halogen 25-300W
12V ELV Tungsten halogen
with wirewound or electronic
transformers 35-300W

1G 600W Dimmer
GLS Tungsten filament
Tungstent Halogen 25-600W
12V ELV Tungsten halogen
with wirewound or electronic
transformers 35-600W

2G 600W Dimmer
GLS Tungsten filament
Tungstent Halogen
25-300W/channel

12V ELV Tungsten halogen
with wirewound or electronic
transformers 35-300W/channel

Not suitable for any other
load type. Do not use
different types of lamp on
the same load circuit.

technical hotline +44 (0)1268 563720

wiring devices

Switch Fascias

Dimmer Fascias also used for Battery and Mains Controllers

Accessories

1 GANG

2 GANG

1 GANG

2 GANG



FINISHES – METAL

BRUSHED STAINLESS STEEL	OPT	LSF21 BSS W	LSF22 BSS W	LDF21 BSS W	LDF22 BSS W
	STD	LSF21 BSS B	LSF22 BSS B	LDF21 BSS B	LDF22 BSS B
LACQUERED BRUSHED STEEL	OPT	LSF21 LBS W	LSF22 LBS W	LDF21 LBS W	LDF22 LBS W
	STD	LSF21 LBS B	LSF22 LBS B	LDF21 LBS B	LDF22 LBS B
POLISHED BRASS	STD	LSF21 PBR B	LSF22 PBR B	LDF21 PBR B	LDF22U PBR B
POLISHED CHROME	STD	LSF21 POC B	LSF22 POC B	LDF21 POC B	LDF22 POC B

LRC130

ALTERNATIVE BUTTONS FOR REMOTE CONTROL (PACK CONTAINS 30 VARIATIONS)

For complementary mechanical products for the Metal finish please see the Aspect range on page 76.

FINISHES – PLASTIC

TITANIUM	LSF11 TTA	LSF12 TTA	LDF11 TTA	LDF12 TTA
CHARCOAL	LSF11 CHA	LSF12 CHA	LDF11 CHA	LDF12 CHA
CHAMPAGNE	LSF11 CHM	LSF12 CHM	LDF11 CHM	LDF12 CHM
WHITE	LSF11 WHI	LSF12 WHI	LDF11 WHI	LDF12 WHI

For complementary mechanical products for the Plastic finish please see the selection below.



L63911U*

L63911*

1 GANG 1 WAY 10AX WIDE ROCKER SINGLE POLE PLATESWITCH



L63912U*

L63912*

1 GANG 2 WAY 10AX WIDE ROCKER SINGLE POLE PLATESWITCH



L63922U*

L63922*

2 GANG 2 WAY 10AX WIDE ROCKER SINGLE POLE PLATESWITCH



L63932U*

L63932*

3 GANG 2 WAY 10AX WIDE ROCKER SINGLE POLE PLATESWITCH



L63923U*

L63923*

1 GANG 20AX WIDE ROCKER DOUBLE POLE PLATESWITCH WITH NEON INDICATOR



L63904NU*

L63904N*

2 GANG 20AX WIDE ROCKER DOUBLE POLE PLATESWITCH WITH NEON INDICATOR



L63757*

L63757*

1 GANG 13 AMP SWITCHED SOCKET OUTLET



L63747*

L63747*

2 GANG 13 AMP SWITCHED SOCKET OUTLET



L63610*

L63610*

2 GANG SHAVER UNIT DUAL VOLTAGE 115/230V OUTPUT



L63451*

L63451*

EURO DATACOM FASCIA 50X50MM



L63529*

L63529*

CABLE TV SOCKET WITH 'F' TYPE CONNECTOR



L63521*

L63521*

ISOLATED 1 GANG CABLE TV SOCKET



L63817*

L63817*

RJ11 AMERICAN TYPE (4 WIRE) TELEPHONE SOCKET OUTLET



L63070BC*

L63070BC*

1 GANG 13 AMP SWITCHED FUSED CONNECTION UNIT WITH FLEX OUTLET

* add the appropriate finish to the end of the product code