

ANOTHER WINNER
from *Hamilton*

Uniclass	EPIC
L74 735	K712
CI/Sfb	(62X) (63) X

Hartland CFX[®]



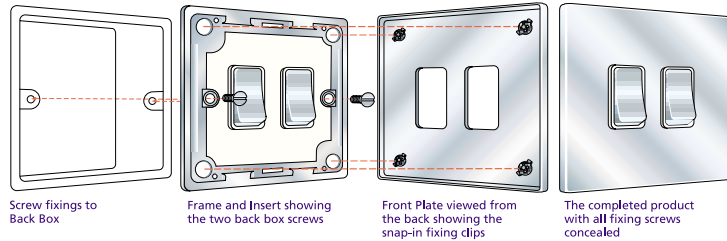
Hamilton

Concealed Fixing Accessories
on Stylish Super Slim Plates

Hamilton Hartland CFX®



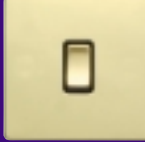


Concealed Fixing Accessories on Stylish Super Slim Plates

Hamilton Hartland CFX® Concealed Fixing



Description

Description	Nominal Plate Size mm	Min. Wall Box Depth mm	
Rocker Switches			
R21 R22 R23 R24 R26	1 gang 2 Way 10AX Rocker 2 gang 2 Way 10AX Rocker 3 gang 2 Way 10AX Rocker 4 gang 2 Way 10AX Rocker 6 gang 2 Way 10AX Rocker	86 x 86 86 x 86 86 x 86 145 x 86 145 x 86	25 25 25 25 25
R31 R32 BCP TP	1 gang Intermediate 10AX Rocker 2 gang Intermediate 10AX Rocker 1 gang 2 Way 10AX PTM Retractive Rocker	86 x 86 86 x 86 86 x 86	25 25 25
R21/20 R22/20 R23/20 R24/20 R31/20 R32/20	1 gang 10AX Triple Pole Rocker 1 gang 2 Way 20AX Rocker 2 gang 2 Way 20AX Rocker 3 gang 2 Way 20AX Rocker 4 gang 2 Way 20AX Rocker 1 gang Intermediate 20AX Rocker 2 gang Intermediate 20AX Rocker	86 x 86 86 x 86 86 x 86 145 x 86 145 x 86 86 x 86 86 x 86	25 25 25 25 25 25 25
Dolly Switches			
S21 S22 S23 S24 S31	1 gang 2 Way 20AX Dolly 2 gang 2 Way 20AX Dolly 3 gang 2 Way 20AX Dolly 4 gang 2 Way 20AX Dolly 1 gang 20AX Intermediate Dolly	86 x 86 86 x 86 145 x 86 145 x 86 86 x 86	35 35 35 35 35
Key Switch			
K21 K21ELT	1 gang 2 Way 20AX Key Switch 1 gang 2 Way 20AX Key Switch Printed "EMG LTG TEST"	86 x 86 86 x 86	25 25
Sockets			
SS1 SS2 US2 US5 SHS	1 gang 13A Double Pole Switched Socket 2 gang 13A Double Pole Switched Socket 1 gang 2A Unswitched Socket 1 gang 5A Unswitched Socket Shaver Socket (Dual Voltage)	86 x 86 145 x 86 86 x 86 86 x 86 86 x 145	35 35 35 35 47
Television Coaxial Sockets			
TV TVFM TVI TV+SAT SAT SATI	1 gang Non Isolated Television 1in/1out 2 gang Isolated TV/FM 1in/2 out 1 gang Isolated Television 1 in/1 out 1 gang TV + 1 gang Satellite 1 gang Non Isolated Satellite 1 gang Isolated Satellite	86 x 86 86 x 86 86 x 86 86 x 86 86 x 86 86 x 86	25 25 25 35 35 35
Digital Television Sockets - Screened Non Isolated			
DGTPI DAGENT DAGENT+TVF+TCS DGTVF DGTVM DGSAT	1 gang TV + 1 gang FM + 1 gang Satellite 1 gang TV + 1 gang Satellite 1 + 1 gang Satellite 2 + 1 gang FM + 1 gang TCS + 1 gang TVF 1 gang TV + 1 gang Satellite 1 + 1 gang Satellite 2 + 1 gang FM 1 gang TV (Female) 1 gang TV (Male) 1 gang Satellite 'F' Type	86 x 86 145 x 86 86 x 86 86 x 86 86 x 86 86 x 86	35 35 35 35 35 35
Telephone & Data Outlets			
TCM TCS RJ12 RJ12/2 RJ45 RJ45/2	1 gang Telephone Master 1 gang Telephone Slave 1 gang RJ12 Outlet - Unshielded 2 gang RJ12 Outlet - Unshielded 1 gang RJ45 Outlet CAT 5E - Unshielded 2 gang RJ45 Outlet CAT 5E - Unshielded	86 x 86 86 x 86 86 x 86 86 x 86 86 x 86 86 x 86	25 25 35 35 35 35
Double Pole Switches			
DPN 45DPN 45DPNSS1	1 gang 20A Double Pole Rocker + Neon 1 gang 45A Double Pole Red Rocker + Neon 1 gang 45A Double Pole Red Rocker + Neon + 13A Switched Socket	86 x 86 86 x 86 145 x 86	25 35 35
Connection Units			
SPN FN	1 gang 13A Fused Spur, Double Pole + Neon 1 gang 13A Fuse + Red Neon Halo	86 x 86 86 x 86	35 35
Push On/Off Resistive Dimmers			
1X40 2X40 3X40 4X40 1X60 1X1K	1 gang 2 way 400W 2 gang 2 way 400W 3 gang 2 way 400W 4 gang 2 way 300W (Max. wattage per gang 300 watts) 1 gang 2 way 600W 1 gang 2 way 1000W	86 x 86 86 x 86 145 x 86 145 x 86 86 x 86 145 x 86	35 35 35 35 35 35
<p>Note: When using Mains Voltage Halogen Lamps - Dimmers should be de-rated by 25%</p>			
Push On/Off Inductive Dimmers			
1X2V 1X3V	1 gang 2 way 200VA 1 gang 2 way 300VA	86 x 86 86 x 86	35 35
Blanking Plates			
BPS BPD	Single Blank Plate Double Blank Plate	86 x 86 145 x 86	35 35

British Standard	Bright Chrome		Polished Brass		Satin Brass
	Bright Chrome/ White Inserts	Bright Chrome/ Black Inserts	Polished Brass/ Black Inserts	Polished Brass/ White Inserts	Satin Brass/ Black Inserts
					
	Order Code	Order Code	Order Code	Order Code	Order Code
BS EN 60669-1	77C R21 BC/WH*	77C R21 BC/BL*	71C R21 PB/BL*	71C R21 PB/WH*	72C R21 SB/BL*
BS EN 60669-1	77C R22 BC/WH*	77C R22 BC/BL*	71C R22 PB/BL*	71C R22 PB/WH*	72C R22 SB/BL*
BS EN 60669-1	77C R23 BC/WH*	77C R23 BC/BL*	71C R23 PB/BL*	71C R23 PB/WH*	72C R23 SB/BL*
BS EN 60669-1	77C R24 BC/WH*	77C R24 BC/BL*	71C R24 PB/BL*	71C R24 PB/WH*	72C R24 SB/BL*
BS EN 60669-1	77C R26 BC/WH*	77C R26 BC/BL*	71C R26 PB/BL*	71C R26 PB/WH*	72C R26 SB/BL*
BS EN 60669-1	77C R31 BC/WH*	77C R31 BC/BL*	71C R31 PB/BL*	71C R31 PB/WH*	72C R31 SB/BL*
BS EN 60669-1	77C R32 BC/WH*	77C R32 BC/BL*	71C R32 PB/BL*	71C R32 PB/WH*	72C R32 SB/BL*
BS EN 60669-1	77C BCP BC/WH*	77C BCP BC/BL*	71C BCP PB/BL*	71C BCP PB/WH*	72C BCP SB/BL*
BS EN 60669-1	77C TP WH	77C TP BL	71C TP BL	71C TP WH	72C TP BL
BS EN 60669-1	77C R21/20 BC/WH*	77C R21/20 BC/BL*	71C R21/20 PB/BL*	71C R21/20 PB/WH*	72C R21/20 SB/BL*
BS EN 60669-1	77C R22/20 BC/WH*	77C R22/20 BC/BL*	71C R22/20 PB/BL*	71C R22/20 PB/WH*	72C R22/20 SB/BL*
BS EN 60669-1	77C R23/20 BC/WH*	77C R23/20 BC/BL*	71C R23/20 PB/BL*	71C R23/20 PB/WH*	72C R23/20 SB/BL*
BS EN 60669-1	77C R24/20 BC/WH*	77C R24/20 BC/BL*	71C R24/20 PB/BL*	71C R24/20 PB/WH*	72C R24/20 SB/BL*
BS EN 60669-1	77C R31/20 BC/WH*	77C R31/20 BC/BL*	71C R31/20 PB/BL*	71C R31/20 PB/WH*	72C R31/20 SB/BL*
BS EN 60669-1	77C R32/20 BC/WH*	77C R32/20 BC/BL*	71C R32/20 PB/BL*	71C R32/20 PB/WH*	72C R32/20 SB/BL*
BS EN 60669-1		77C S21		71C S21	72C S21
BS EN 60669-1		77C S22		71C S22	72C S22
BS EN 60669-1		77C S23		71C S23	72C S23
BS EN 60669-1		77C S24		71C S24	72C S24
BS EN 60669-1		77C S31		71C S31	72C S31
BS EN 60669-1	77C K21 WH	77C K21 BL	71C K21 BL	71C K21 WH	72C K21 BL
BS EN 60669-1	77C K21ELT WH	77C K21ELT BL	71C K21ELT BL	71C K21ELT WH	72C K21ELT BL
BS 1363	77C SS1 BC/WH*	77C SS1 BC/BL*	71C SS1 PB/BL*	71C SS1 PB/WH*	72C SS1 SB/BL*
BS 1363	77C SS2 BC/WH*	77C SS2 BC/BL*	71C SS2 PB/BL*	71C SS2 PB/WH*	72C SS2 SB/BL*
BS 546	77C US2 WH	77C US2 BL	71C US2 BL	71C US2 WH	72C US2 BL
BS 546	77C US5 WH	77C US5 BL	71C US5 BL	71C US5 WH	72C US5 BL
BS 4573	77C SHS WH	77C SHS BL	71C SHS BL	71C SHS WH	72C SHS BL
	77C TV WH	77C TV BL	71C TV BL	71C TV WH	72C TV BL
	77C TVFM WH	77C TVFM BL	71C TVFM BL	71C TVFM WH	72C TVFM BL
	77C TVI WH	77C TVI BL	71C TVI BL	71C TVI WH	72C TVI BL
	77C TV+SAT WH	77C TV+SAT BL	71C TV+SAT BL	71C TV+SAT WH	72C TV+SAT BL
	77C SAT WH	77C SAT BL	71C SAT BL	71C SAT WH	72C SAT BL
	77C SATI WH	77C SATI BL	71C SATI BL	71C C SATI WH	72C SATI BL
	77C DGTRI WH	77C DGTRI BL	71C DGTRI BL	71C DGTRI WH	72C DGTRI BL
	77C DGENT+TVF+TCS WH	77C DGENT+TVF+TCS BL	71C DGENT+TVF+TCS BL	71C DGENT+TVF+TCS WH	72C DGENT+TVF+TCS BL
	77C DGENT WH	77C DGENT BL	71C DGENT BL	71C DGENT WH	72C DGENT BL
	77C DGTVF WH	77C DGTVF BL	71C DGTVF BL	71C DGTVF WH	72C DGTVF BL
	77C DGTVM WH	77C DGTVM BL	71C DGTVM BL	71C DGTVM WH	72C DGTVM BL
	77C DGSAT WH	77C DGSAT BL	71C DGSAT BL	71C DGSAT WH	72C DGSAT BL
	77C TCM WH	77C TCM BL	71C TCM BL	71CTCM WH	72C TCM BL
	77C TCS WH	77C TCS BL	71C TCS BL	71C TCS WH	72C TCS BL
	77C RJ12 WH	77C RJ12 BL	71C RJ12 BL	71C RJ12 WH	72C RJ12 BL
	77C RJ12/2 WH	77C RJ12/2 BL	71C RJ12/2 BL	71C RJ12/2 WH	72C RJ12/2 BL
	77C RJ45 WH	77C RJ45 BL	71C RJ45 BL	71C RJ45 WH	72C RJ45 BL
	77C RJ45/2 WH	77C RJ45/2 BL	71C RJ45/2 BL	71C RJ45/2 WH	72C RJ45/2 BL
BS EN 60669-1	77C DPN BC/WH*	77C DPN BC/BL*	71C DPN PB/BL*	71C DPN PB/WH*	72C DPN SB/BL*
BS EN 60669-1	77C 45DPN WH	77C 45DPN BL	71C 45DPN BL	71C 45DPN WH	72C 45DPN BL
BS 4177	77C 45DPNSS1 BC/WH*	77C 45DPNSS1 BC/BL*	71C 45DPNSS1 PB/BL*	71C 45DPNSS1 PB/WH*	72C 45DPNSS1 SB/BL*
BS 1363	77C SPN BC/WH*	77C SPN BC/BL*	71C SPN PB/BL*	71C SPN PB/WH*	72C SPN SB/BL*
BS 5733		77C FN BC		71C FN PB	72C FN
BS EN 60669-2-1		77C P1X400		71C P1X400	72C P1
BS EN 60669-2-1		77C P2X400		71C P2X400	72C P2
BS EN 60669-2-1		77C P3X400		71C P3X400	72C P3
BS EN 60669-2-1		77C P4X400		71C P4X400	72C P4
BS 5518		77C P1X600		71C P1X600	72C P1
		77C P1X1000		71C P1X1000	72C P1
		77C P1X200VA		71C P1X200VA	72C P1
		77C P1X300VA		71C P1X300VA	72C P1
		77C BPS		71C BPS	72C BP
		77C BPD		71C BPD	72C BP

Satin Brass

Satin Brass/
Black Inserts



Order Code

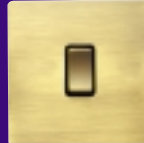
Satin Brass/
White Inserts



Order Code

Antique Brass

Antique Brass/
Black Inserts



Order Code

Satin Stainless Finish

Satin Stainless Finish/
White Inserts



Order Code

Satin Stainless Finish/
Black Inserts



Order Code

Black Nickel

Black Nickel/
Black Inserts



Order Code

72C R21 SB/BL*
72C R22 SB/BL*
72C R23 SB/BL*
72C R24 SB/BL*
72C R26 SB/BL*
72C R31 SB/BL*
72C R32 SB/BL*
72C BCP SB/BL*
72C TP BL
72C R21/20 SB/BL*
72C R22/20 SB/BL*
72C R23/20 SB/BL*
72C R24/20 SB/BL*
72C R31/20 SB/BL*
72C R32/20 SB/BL*

72C R21 SB/WH*
72C R22 SB/WH*
72C R23 SB/WH*
72C R24 SB/WH*
72C R26 SB/WH*
72C R31 SB/WH*
72C R32 SB/WH*
72C BCP SB/WH*
72C TP WH
72C R21/20 SB/WH*
72C R22/20 SB/WH*
72C R23/20 SB/WH*
72C R24/20 SB/WH*
72C R31/20 SB/WH*
72C R32/20 SB/WH*

79C R21 AB/BL*
79C R22 AB/BL*
79C R23 AB/BL*
79C R24 AB/BL*
79C R26 AB/BL*
79C R31 AB/BL*
79C R32 AB/BL*
79C BCP AB/BL*
79C TP BL
79C R21/20 AB/BL*
79C R22/20 AB/BL*
79C R23/20 AB/BL*
79C R24/20 AB/BL*
79C R31/20 AB/BL*
79C R32/20 AB/BL*

74C R21 SS/WH*
74C R22 SS/WH*
74C R23 SS/WH*
74C R24 SS/WH*
74C R26 SS/WH*
74C R31 SS/WH*
74C R32 SS/WH*
74C BCP SS/WH*
74C TP WH
74C R21/20 SS/WH*
74C R22/20 SS/WH*
74C R23/20 SS/WH*
74C R24/20 SS/WH*
74C R31/20 SS/WH*
74C R32/20 SS/WH*

74C R21 SS/BL*
74C R22 SS/BL*
74C R23 SS/BL*
74C R24 SS/BL*
74C R26 SS/BL*
74C R31 SS/BL*
74C R32 SS/BL*
74C BCP SS/BL*
74C TP BL
74C R21/20 SS/BL*
74C R22/20 SS/BL*
74C R23/20 SS/BL*
74C R24/20 SS/BL*
74C R31/20 SS/BL*
74C R32/20 SS/BL*

78C R21 BK/BL*
78C R22 BK/BL*
78C R23 BK/BL*
78C R24 BK/BL*
78C R26 BK/BL*
78C R31 BK/BL*
78C R32 BK/BL*
78C BCP BK/BL*
78C TP BL
78C R21/20 BK/BL*
78C R22/20 BK/BL*
78C R23/20 BK/BL*
78C R24/20 BK/BL*
78C R31/20 BK/BL*
78C R32/20 BK/BL*

72C S21
72C S22
72C S23
72C S24
72C S31

79C S21
79C S22
79C S23
79C S24
79C S31

74C S21
74C S22
74C S23
74C S24
74C S31

78C S21
78C S22
78C S23
78C S24
78C S31

72C K21 BL
72C K21ELT BL

72C K21 WH
72C K21ELT WH

79C K21 BL
79C K21ELT BL

74C K21 WH
74C K21ELT WH

74C K21 BL
74C K21ELT BL

78C K21 BL
78C K21ELT BL

72C SS1 SB/BL*
72C SS2 SB/BL*
72C US2 BL
72C US5 BL
72C SHS BL

72C SS1 SB/WH*
72C SS2 SB/WH*
72C US2 WH
72C US5 WH
72C SHS WH

79C SS1 AB/BL*
79C SS2 AB/BL*
79C US2 BL
79C US5 BL
79C SHS BL

74C SS1 SS/WH*
74C SS2 SS/WH*
74C US2 WH
74C US5 WH
74C SHS WH

74C SS1 SS/BL*
74C SS2 SS/BL*
74C US2 BL
74C US5 BL
74C SHS BL

78C SS1 BK/BL*
78C SS2 BK/BL*
78C US2 BL
78C US5 BL
78C SHS BL

72C TV BL
72C TVFM BL
72C TVI BL
72C TV+SAT BL
72C SAT BL
72C SATI BL

72C TV WH
72C TVFM WH
72C TVI WH
72C TV+SAT WH
72C SAT WH
72C SATI WH

79C TV BL
79C TVFM BL
79C TVI BL
79C TV+SAT BL
79C SAT BL
79C SATI BL

74C TV WH
74C TVFM WH
74C TVI WH
74C TV+SAT WH
74C SAT WH
74C SATI WH

74C TV BL
74C TVFM BL
74C TVI BL
74C TV+SAT BL
74C SAT BL
74C SATI BL

78C TV BL
78C TVFM BL
78C TVI BL
78C TV+SAT BL
78C SAT BL
78C SATI BL

72C DGTRI BL
72C DGENT+TVF+TCS BL
72C DGENT BL
72C DGTVF BL
72C DGTVM BL
72C DGSAT BL

72C DGTRI WH
72C DGENT+TVF+TCS WH
72C DGENT WH
72C DGTVF WH
72C DGTVM WH
72C DGSAT WH

79C DGTRI BL
79C DGENT+TVF+TCS BL
79C DGENT BL
79C DGTVF BL
79C DGTVM BL
79C DGSAT BL

74C DGTRI WH
74C DGENT+TVF+TCS WH
74C DGENT WH
74C DGTVF WH
74C DGTVM WH
74C DGSAT WH

74C DGTRI BL
74C DGENT+TVF+TCS BL
74C DGENT BL
74C DGTVF BL
74C DGTVM BL
74C DGSAT BL

78C DGTRI BL
78C DGENT+TVF+TCS BL
78C DGENT BL
78C DGTVF BL
78C DGTVM BL
78C DGSAT BL

72C TCM BL
72C TCS BL
72C RJ12 BL
72C RJ12/2 BL
72C RJ45 BL
72C RJ45/2 BL

72C TCM WH
72C TCS WH
72C RJ12 WH
72C RJ12/2 WH
72C RJ45 WH
72C RJ45/2 WH

79C TCM BL
79C TCS BL
79C RJ12 BL
79C RJ12/2 BL
79C RJ45 BL
79C RJ45/2 BL

74C TCM WH
74C TCS WH
74C RJ12 WH
74C RJ12/2 WH
74C RJ45 WH
74C RJ45/2 WH

74C TCM BL
74C TCS BL
74C RJ12 BL
74C RJ12/2 BL
74C RJ45 BL
74C RJ45/2 BL

78C TCM BL
78C TCS BL
78C RJ12 BL
78C RJ12/2 BL
78C RJ45 BL
78C RJ45/2 BL

72C DPN SB/BL*
72C 45DPN BL
72C 45DPNSS1 SB/BL*

72C DPN SB/WH*
72C 45DPN WH
72C 45DPNSS1 SB/WH*

79C DPN AB/BL*
79C 45DPN BL
79C 45DPNSS1 AB/BL*

74C DPN SS/WH*
74C 45DPN WH
74C 45DPNSS1 SS/WH*

74C DPN SS/BL*
74C 45DPN BL
74C 45DPNSS1 SS/BL*

78C DPN BK/BL*
78C 45DPN BL
78C 45DPNSS1 BK/BL*

72C SPN SB/BL*

72C SPN SB/WH*
72C FN SB

79C SPN AB/BL*
79C FN AB

74C SPN SS/WH*

74C SPN SS/BL*
74C FN SS

78C SPN BK/BL*
78C FN BK

72C P1X400
72C P2X400
72C P3X400
72C P4X400
72C P1X600
72C P1X1000

79C P1X400
79C P2X400
79C P3X400
79C P4X400
79C P1X600
79C P1X1000

74C P1X400
74C P2X400
74C P3X400
74C P4X400
74C P1X600
74C P1X1000

78C P1X400
78C P2X400
78C P3X400
78C P4X400
78C P1X600
78C P1X1000

72C P1X200VA
72C P1X300VA

79C P1X200VA
79C P1X300VA

74C P1X200VA
74C P1X300VA

78C P1X200VA
78C P1X300VA

72C BPS
72C BPD

79C BPS
79C BPD

74C BPS
74C BPD

78C BPS
78C BPD

* To order these accessories with White Plastic Rocker inserts suffix with WH/WH e.g. 77C R21 WH/WH. To order with Black Plastic Rocker inserts suffix with BL/BL e.g. 77C R21 BL/BL.



exclusive design...

Super slim with soft rounded edges, the all NEW HARTLAND CFX® lends dignity to its surroundings. Patented CFX* concealed fixing system, affords seamless styling and sophistication.

exclusive finishes...

The finest materials and production standards are employed to produce a fashion conscious slim plate in a choice of six superb finishes.



exclusive choice...

The comprehensive range of accessories gives a limitless choice in meeting any project constraints a designer may be working to.

ANOTHER WINNER
from Hamilton

Hartland CFX[®]

Concealed Fixing Accessories on Stylish Super Slim Plates



Other products available from the Hamilton Group

- Grid-It Grid Fix Accessories
- Sheer CFX Concealed Fixing
- Linea-Duo CFX Concealed Fixing (available shortly)
- Sheer Range (Box Fix)
- Linea Range Concealed Fixing
- Cheriton Range
- Edwardian, Georgian & Adam Ranges
- Woods & Bloomsbury Range
- Digital Mercury Lighting Controls
- Eurodata Range (Data & Communication Outlets)
- IP Weatherproof Switches and Sockets
- Floor Sockets

All products listed conform to current British or European standards and the product information is correct at the time of going to press.

All accessories are manufactured under an accredited BS EN ISO 9001: 2000 Quality System.

It is the policy of the company to continually improve products as part of our development programme. Therefore, we reserve the right to alter designs and dimensions without prior notice.

Illustrations and diagrams are reproduced within the limitations of reproduction and printing processes and are not binding.

Due to manufacturing processes we cannot guarantee an exact colour match and shadings of certain finishes.

Hamilton[®]
Litestat group

For further information please contact:

R. Hamilton & Co. Ltd., Quarry Industrial Estate, Mere, Wiltshire BA12 6LA, UK
Telephone: +44 (0)1747 860088 Facsimile: +44 (0)1747 861032
email: info@hamilton-litestat.com www.hamilton-litestat.com



Patents: Hartland CFX R21 Design: 3023446, Hartland CFX SS2 Design: 3023445